

Concertino East and West

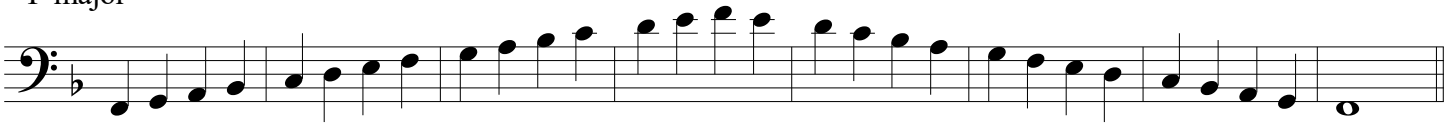
Trombone



greater twin cities youth symphonies

♩ = 100

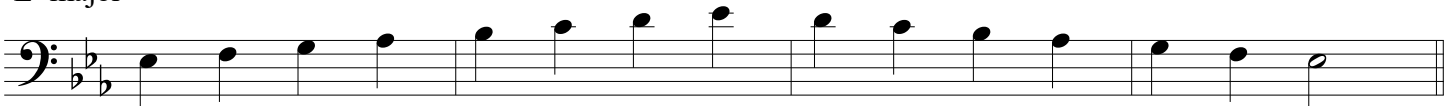
F major



Bb major



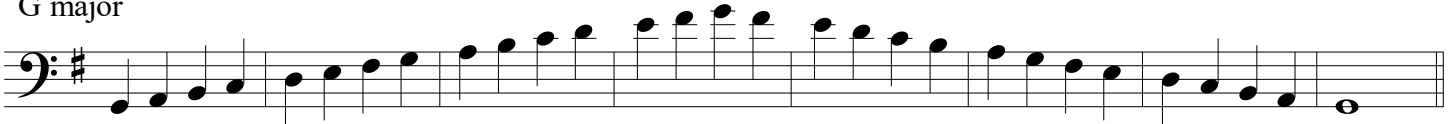
Eb major



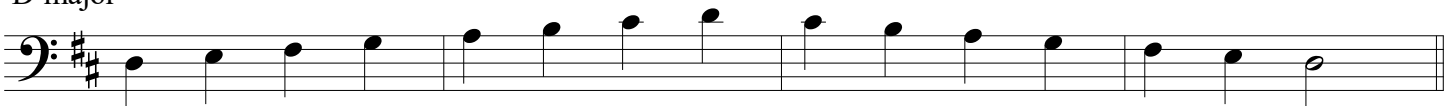
C major



G major



D major



These scales are for reference only; students may perform their scales in the format and octave of their choice for auditions.

Chromatic scale

The musical notation consists of three lines of music in the bass clef, representing a chromatic scale. The first line shows the ascent: B1, C1, D1, E1, F1, G1, A1, B1. The second line shows the continuation of the descent: C1, D1, E1, F1, G1, A1, B1. The third line shows the final notes: C1, D1, E1, F1, G1, A1, B1, ending with a final B1 note.