

# Sinfonia East and West

## Bassoon



greater twin cities youth symphonies

♩ = 92

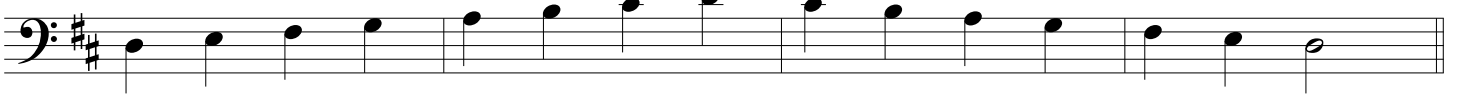
C major



G major



D major



A major



F major



Bb major



Eb major



These scales are for reference only; students may perform their scales in the format and octave of their choice for auditions.

Sinfonia East and West (Bassoon)

Chromatic scale

The image displays a musical score for a Bassoon, consisting of three staves of music. Each staff begins with a bass clef. The first staff contains 12 measures of a chromatic scale ascending from G2 to G3. The notes are: G2, A2, B2, C3, D3, E3, F3, G3, A3, B3, C4, D4. The second staff contains 12 measures of a chromatic scale descending from D4 to G2. The notes are: D4, C4, B3, A3, G3, F3, E3, D3, C3, B2, A2, G2. The third staff contains 12 measures of a chromatic scale ascending from G2 to G3, identical to the first staff. The notes are: G2, A2, B2, C3, D3, E3, F3, G3, A3, B3, C4, D4. The score is written in a standard musical notation style with a key signature of one sharp (F#) and a common time signature.