

## 2026-27 Audition Guidelines: TUBA

Auditions for the Greater Twin Cities Youth Symphonies (GTCYS, pronounced git-seez) are opportunities to play your instrument and submit a short, recorded video so we can place you with one of our 11 incredible school-year orchestras! Because of GTCYS' multi-level orchestra structure, almost every student is accepted!

### WHAT TO PREPARE

The next pages of this packet list the required scales and excerpts for each playing level. Once you decide which level best fits your abilities, prepare:

1. All the **scales** listed for your audition level. Minor scales can be performed in any form (natural, harmonic, or melodic), unless otherwise stated.
2. **Solo**: Prepare a piece of music (solo, etude, school ensemble music, or similar) that demonstrates your best playing abilities, that's no longer than 3 minutes. Record without piano accompaniment. Select a shorter section to fit the time limit if needed.
3. All the **excerpts** (short selections of music) listed for your audition level.

### AUDITION STEPS

1. **Register for your audition** at [snapaudition.com](https://snapaudition.com): Click "Find an Audition" and search for Greater Twin Cities Youth Symphonies.
2. **Pick one level** based on your abilities and experience. To learn more about each orchestra, visit [gtcys.org/orchestras](https://gtcys.org/orchestras).

Skill Level	Typical Strings Orchestra Placement	Typical Winds, Brass, Percussion, and Harp Orchestra Placement
Beginning	Philharmonia	Sinfonia
Developing	Sinfonia Concertino	Concertino
Intermediate	Camerata Concert Orchestra	Camerata Concert Orchestra
Advanced	Philharmonic Symphony	Philharmonic Symphony

3. **Practice**, practice, practice!
4. **Record your audition video in one take** (no editing!)
5. Complete your registration in [snapaudition.com](https://snapaudition.com) and **upload your audition video** by **Tuesday, May 19, 2026 at 11:59pm**.
6. **Audition results will be emailed in June.**

### MORE INFO

Find detailed instructions, tips, frequently asked questions, and tuition assistance information at [gtcys.org/auditions](https://gtcys.org/auditions). Contact us at [mail@gtcys.org](mailto:mail@gtcys.org) or call 651.602.6800 with questions.

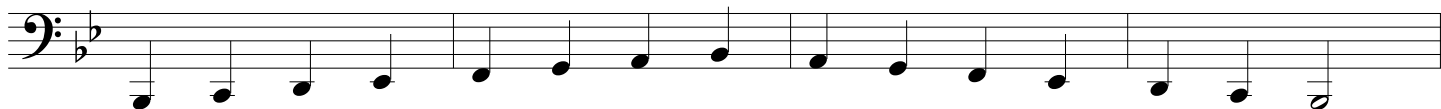
# TUBA - Sinfonia East & West

Musicians should have playing experience through two sharps and flats. Prepare and record the following requirements if they accurately represent your current skill level. Your chosen audition level doesn't guarantee or limit your orchestra placement.

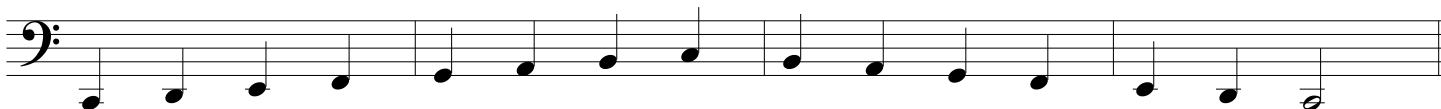
## SCALES

- Scales may be performed with any articulation.

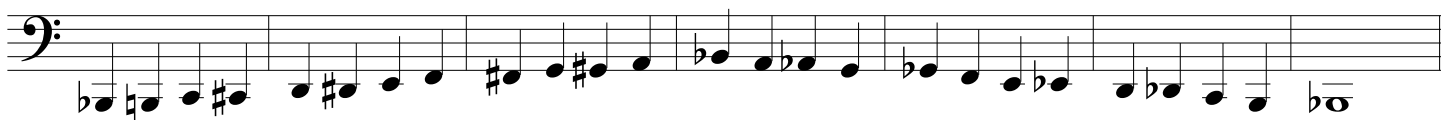
B-flat major ♩ = 70



C major ♩ = 70



Chromatic ♩ = 70 (Notes below only for reference; players can choose any octave and wider range if possible)



## SOLO

- Your choice - 3 minutes or less, unaccompanied

## EXCERPT

VanderCook - *Etude No. 4*, mm. 1-16



# TUBA - Concertino East & West

Musicians should have playing experience through three sharps and flats. Prepare and record the following requirements if they accurately represent your current skill level. Your chosen audition level doesn't guarantee or limit your orchestra placement.

## SCALES

- Scales may be performed with any articulation.

E-flat major - 1 octave ♩ = 84



G major - 1 octave ♩ = 84



Chromatic ♩ = 84 (notes below only for reference; players can choose any octave and wider range if possible)



## SOLO

- Your choice - 3 minutes or less, unaccompanied

## EXCERPTS

VanderCook - *Etude No. 8*, mm. 1-16



**EXCERPTS CONTINUE ON FOLLOWING PAGE**



# TUBA - Camerata orchestras and Concert Orchestra

Musicians should be comfortable in advanced key signatures and have good sight-reading skills. Prepare and record the following requirements if they accurately represent your current skill level. Your chosen audition level doesn't guarantee or limit your orchestra placement.

## SCALES

- G minor - 2 octaves (if possible) in quarter notes (quarter note = 100)
- E-flat major - 2 octaves (if possible) in quarter notes (quarter note = 100)
- Chromatic - 2 octaves (any starting note, wider range if possible) in quarter notes (quarter note = 100)

## SOLO

- Your choice - 3 minutes or less, unaccompanied

## EXCERPTS

Grigoriev - 50 Etudes for Tuba, Etude No. 22, mm. 1-16

**Marciale**  $\text{♩} = 80$

*mf patetico*

*f*

Mussorgsky, orch. Ravel - Pictures at an Exhibition, Mvt. 9: "Baba-Yaga," Reh. 92 - Reh. 93

**Andante mosso**  $\text{♩} = 90$

*p*

# TUBA - Philharmonic and Symphony

Musicians should be skilled in all major and minor keys, have advanced use of vibrato, and be able to double and triple tongue. Prepare and record the following requirements if they accurately represent your current skill level. Your chosen audition level doesn't guarantee or limit your orchestra placement.

## SCALES

- B major - 2 octaves in eighth notes (quarter note = 72)
- F-sharp minor - 2 octaves in eighth notes (quarter note = 72)
- Chromatic - 2 octaves (any starting note, wider range if possible) in eighth notes (quarter note = 72)

## SOLO

- Your choice - 3 minutes or less, unaccompanied

## EXCERPTS

Mahler - *Symphony No. 3, Mvt. 1*, mm. 833-857

Schwungvoll.



Mahler - *Symphony No. 3, Mvt. 3*  
4 mm. before Reh. 20 - Reh. 21

Comodo. Scherzando.  
Ohne Hast.



EXCERPTS CONTINUE ON FOLLOWING PAGE

# TUBA - Philharmonic and Symphony (continued)

Mahler - *Symphony No. 3, Mvt. 3*, 2 mm. before Reh. 23 - Reh. 24

**Comodo. Scherzando.**  
**Ohne Hast.**

**Grob. 4**

