

# 2024-25 Audition Guidelines: PERCUSSION



- Auditions for the Greater Twin Cities Youth Symphonies (GTCYS - pronounced git-seez) are opportunities to play your instrument and submit a recorded video to us so we can get to know you and place you with one of our 11 incredible school-year orchestras!
- Please contact us at [mail@gtcys.org](mailto:mail@gtcys.org) or call 651.602.6800 if you have any questions about the audition process or requirements.

## AUDITION STEPS

1. Register for an audition at [gtcys.org/auditions](https://gtcys.org/auditions).
2. Decide which audition level to prepare. **Pick one level** based on your abilities and experience. To learn more about each of our groups, click the name of an orchestra below or visit [gtcys.org/programs/orchestras](https://gtcys.org/programs/orchestras).

Skill Levels	Strings Audition Levels	Winds, Brass, and Percussion Audition Levels
Beginning skills	<b>Philharmonia East &amp; West</b>	<b>Sinfonia East &amp; West</b>
Developing skills	<b>Sinfonia East &amp; West / Concertino East &amp; West</b>	<b>Concertino East &amp; West</b>
Advanced skills	<b>Camerata orchestras / Concert Orchestra</b>	<b>Camerata orchestras / Concert Orchestra</b>
Most advanced skills	<b>Philharmonic / Symphony</b>	<b>Philharmonic / Symphony</b>

3. Practice, practice, practice!
4. **Record your audition video in one take** and submit it online by **Wednesday, May 22, 2024**.
5. See [gtcys.org/auditions](https://gtcys.org/auditions) for deadlines, video submission instructions, audition tips, frequently asked questions, information about tuition assistance, and more.

## WHAT TO PRACTICE FOR YOUR AUDITION

### SCALES

- Prepare and record all scales listed in your audition level – use the listed tempos as a guide.
- Scales are written out for some levels - you can choose any articulation.
- Minor scales can be performed in any form (natural, harmonic, or melodic), unless otherwise stated.

### SOLO

- Prepare music that demonstrates your best playing abilities. Selections can include solos, studies, school ensemble music, or other works.
- **Your recorded solo should not be more than 3 minutes in length.** If needed, please choose a shorter section of your solo to fit this time requirement.

### EXCERPTS

- Excerpts are short sections taken from larger pieces of music.
- Prepare all excerpts listed in your audition level and follow all markings.
- Look up or translate any unfamiliar musical terms to ensure a successful performance.
- Listen to recordings of excerpts (when available through YouTube, Spotify, etc.) for guidance with tempos, musicality, and phrasing – your excerpt performance will be judged on all artistic merits, not just note accuracy.

## WHAT HAPPENS AFTER AUDITIONING

- Local professional musicians will listen to your recording and you will be placed in an orchestra based on your audition performance. Other factors such as instrumentation needs may be considered as well.
- The audition level you choose to prepare does not ensure placement in those orchestras; placements are based on the overall quality of your performance.
- GTCYS makes every effort to offer all students placements; if you are placed in an orchestra that has too many of your instrument then you may be placed on a waitlist.
- **Tuition assistance and support for private lessons is available.** GTCYS is committed to serving young musicians regardless of financial constraints. Interested families can find more information at [gtcys.org/auditions](https://gtcys.org/auditions).
- Previous participation in GTCYS does not guarantee placement and **all placements are final**.

# PERCUSSION - Sinfonia East & West

Musicians should have playing experience through two sharps and flats. To audition for one of these orchestras, please prepare and record the following materials. Recordings can be done in separate takes in order to change instruments.

## SCALES

- Can be performed on bells, xylophone, or marimba (no piano)
- Scales may be performed with any articulation.

G major - 1 octave ♩ = 100



D minor - 1 octave ♩ = 100



## SOLO

- Your choice - 3 minutes or less

## EXCERPTS

### Bells

King - *The More We Work Together*



### Snare Drum

Barnett - *Remembering Khachaturian*, 5th m. of Reh N - Reh O



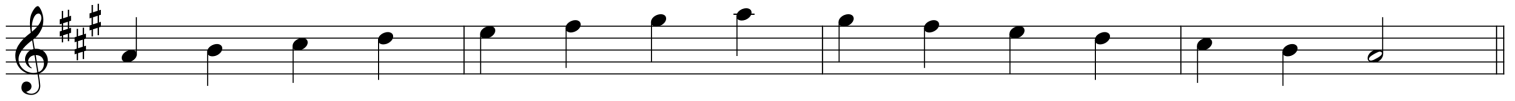
# PERCUSSION - Concertino East & West

Musicians should be comfortable playing through three sharps and flats. To audition for one of these orchestras, please prepare and record the following materials. Recordings can be done in separate takes in order to change instruments.

## SCALES

- Can be performed on bells, xylophone, or marimba (no piano)
- Scales may be performed with any articulation.

A major - 1 octave ♩ = 100



C minor - 1 octave ♩ = 100



## SOLO

- Your choice - 3 minutes or less

## EXCERPTS

### Bells

Newbold - *Warrior Legacy*, mm. 25-41

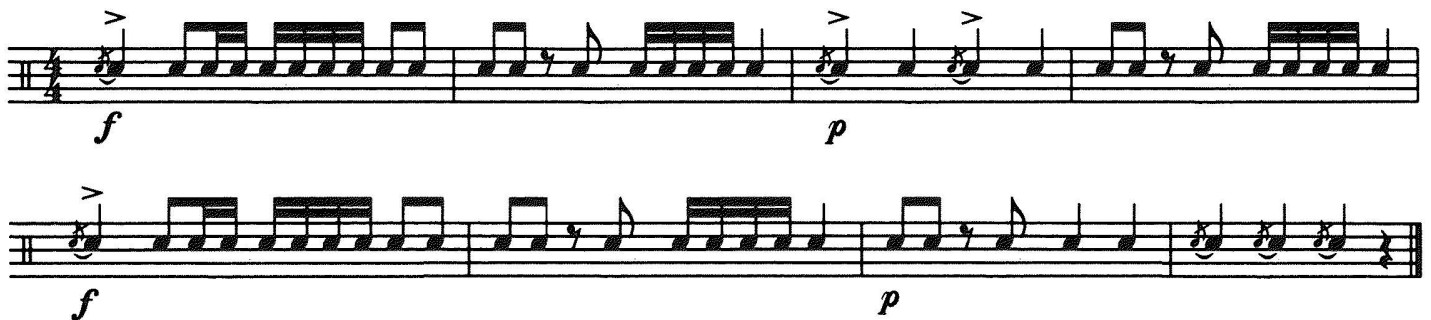
Maestoso (♩ = 92)



### Snare Drum

Rudimentary Exercise

♩ = 120



## PERCUSSION - Camerata orchestras and Concert Orchestra

Musicians should have playing experience through four sharps and flats and have good sight-reading skills. To audition for one of these orchestras, please prepare and record the following. Recordings can be done in separate takes in order to change instruments.

### SCALES (can be performed on bells, xylophone, or marimba)

- A major - 2 octaves in eighth notes (quarter note = 72)
- G minor - 2 octaves in eighth notes (quarter note = 72)

### SOLO

- Your choice, any instrumentation (no piano); total time of 3 minutes or less

### EXCERPTS

#### Snare Drum

Sousa - *El Capitan*

Sheet music for Snare Drum, Sousa - *El Capitan*. The tempo is marked  $\text{♩} = 100$ . The notation is in bass clef with a key signature of one sharp (F#). It features three staves of music. The first staff begins with a fortissimo (*ff*) dynamic and includes accents. The second staff begins with a piano (*p*) dynamic and includes a crescendo hairpin. The third staff includes a decrescendo hairpin.

#### Tambourine

Tchaikovsky - *Trepak*, from the *Nutcracker*, 6th m. of Reh C - end

Tempo di trepak,  
molto vivace.

Sheet music for Tambourine, Tchaikovsky - *Trepak*, from the *Nutcracker*, 6th m. of Reh C - end. The tempo is marked "Tempo di trepak, molto vivace." The notation is in treble clef with a key signature of one sharp (F#) and a 2/4 time signature. It features three staves of music. The first staff begins with a fortissimo (*ff*) dynamic. The second staff includes a "stringendo" marking and a first ending bracket labeled "1". The third staff includes a "Prestissimo" marking, a "sempre *ff*" dynamic, and a second ending bracket labeled "2".

EXCERPTS CONTINUE ON FOLLOWING PAGE

PERCUSSION - Camerata orchestras and Concert Orchestra  
(continued)

**Bells**

Tchaikovsky - *Sleeping Beauty*

**Allegro.** (Tempo di Valse)

The musical score for the Bells part is written on six staves. The key signature is two flats (B-flat and E-flat), and the time signature is 3/4. The tempo is marked 'Allegro. (Tempo di Valse)'. The first staff begins with a piano (*p*) dynamic. The notation consists of eighth and sixteenth notes, often beamed together, with many notes having stems pointing upwards. The piece concludes with a double bar line and a fermata over the final note.



## PERCUSSION - Philharmonic and Symphony

Musicians should have playing experience in all major and minor keys and have excellent sight-reading skills. To audition for one of these orchestras, please prepare and record the following. Recordings can be done in separate takes in order to change instruments.

**SCALES** (can be performed on bells, xylophone, or marimba)

- A-flat major - 2 octaves in eighth notes (quarter note = 108)
- F-sharp minor - 2 octaves in eighth notes (quarter note = 108)

## SOLO

- Your choice, any instrumentation (no piano); total time of 3 minutes or less

## EXCERPTS

### Snare Drum

Rimsky-Korsakov - *Scheherazade*, Mvt. 3, Reh D - Reh E

**Andantino quasi Allegretto.**

*pocchiss. più mosso*

Measures 1-9 of the Snare Drum excerpt. The notation is on a single staff with a treble clef and a 6/8 time signature. The key signature has one flat (B-flat). The tempo/mood is marked 'Andantino quasi Allegretto.' and 'pocchiss. più mosso'. The dynamics are marked 'p' (piano) and 'dim.' (diminuendo). The measures are numbered 1 through 9. The notation consists of eighth notes and rests, with some measures having a 'p' or 'dim.' marking.

*ppp*

*pocchiss. cresc.*

Rimsky-Korsakov - *Scheherazade*, Mvt. 3, 5th m. of Reh F - Reh H

**Andantino quasi Allegretto.**

Measures 1-7 of the Snare Drum excerpt. The notation is on a single staff with a treble clef and a 6/8 time signature. The key signature has one flat (B-flat). The tempo/mood is marked 'Andantino quasi Allegretto.' and 'pp' (pianissimo). The measures are numbered 1 through 7. The notation consists of eighth notes and rests, with some measures having a 'pp' marking. The key signature changes to G major (one sharp) in measure 4, and back to B-flat major in measure 7.

EXCERPTS CONTINUE ON FOLLOWING PAGE

# PERCUSSION - Philharmonic and Symphony (continued)

## Tambourine

Dvořák - *Carval Overture*, beginning - Reh C

Allegro.

Four staves of music for Tambourine. The first staff begins with a treble clef, a common time signature, and a forte (f) dynamic. It features a series of eighth and sixteenth notes, with first and second endings marked. The second staff starts with a piano (p) dynamic and includes a section marked 'A' with an accent. The third staff has a section marked 'B' with a fortissimo (ff) dynamic and includes trills. The fourth staff continues the rhythmic pattern with trills and a fortissimo (ff) dynamic.

## Xylophone

Kabalevsky - *Overture to Colas Breugnon*

[9] PRESTO

Five staves of music for Xylophone. The first staff is marked 'PRESTO' and begins with a treble clef and a 2/4 time signature. The second staff includes a section marked '[10]' and features a crescendo (cresc.) marking. The third staff has a fortissimo (ff) dynamic and includes a section marked '[11]'. The fourth staff continues with a fortissimo (ff) dynamic. The fifth staff includes a section marked '[12]' and ends with a fortissimo (sf) dynamic.

EXCERPTS CONTINUE ON FOLLOWING PAGE

PERCUSSION - Philharmonic and Symphony (continued)

**Timpani**  
Tchaikovsky - *Symphony No. 5, Mvt. 1*, mm. 498-509

in G, B u. E  
Allegro con anima

*p* *poco a poco cresc.* - - - - -  
503 *fff* *ff*  
509

Tchaikovsky - *Symphony No. 5, Mvt. 4*, mm. 114-128

in G, A u. E  
Allegro vivace (alla breve)

*p cresc.* - - - - - *fff*  
119 1 2 3 4 5 6 7 *dim.*  
126 8 9 *pp* *H*