

2023-24 Audition Guidelines: FLUTE



- Auditions for the Greater Twin Cities Youth Symphonies (GTCYS - pronounced git-seez) are opportunities to play your instrument so we can get to know you and place you with one of our 10 incredible school-year orchestras!
- Please contact us at info@gtcys.org or call 651-602-6800 if you have any questions about the audition process or requirements.

AUDITION STEPS

1. Register for an audition at gtcys.org/auditions.
2. Decide which audition level to prepare. **Pick one level** based on your abilities and experience - click on individual orchestra names below for more information about each group or visit gtcys.org/programs/orchestras.
 - **Philharmonia East and West** strings only - no winds
 - **Sinfonia East and West / Concertino East and West** all instruments - developing
 - **Camerata / Concert Orchestra** all instruments - advancing
 - **Philharmonic / Symphony** all instruments - most advanced
3. Practice, practice, practice!
4. **Record your audition video in one take** and submit it online by **Wednesday, May 24, 2023**.
5. See gtcys.org/auditions for deadlines, video submission instructions, audition tips, frequently asked questions, information about tuition assistance, and more.

WHAT TO PRACTICE FOR YOUR AUDITION

SCALES

- Prepare and record all scales listed in your audition level – use the listed tempos as a guide.
- Scales are written out for some levels - you can choose any articulation.
- Minor scales can be performed in any form (natural, harmonic, or melodic).

SOLO

- Prepare music that demonstrates your best playing abilities. Selections can include solos, studies, school ensemble music, or other works.
- **Your recorded solo should not be more than 3 minutes in length.** If needed, please choose a shorter section of your solo to fit this time requirement.

EXCERPTS

- Excerpts are short sections taken from larger pieces of music.
- Prepare all excerpts listed in your audition level and follow all markings.
- Look up or translate any unfamiliar musical terms to ensure a successful performance.
- Listen to recordings of excerpts (when available through YouTube, Spotify, etc.) for guidance with tempos, musicality, and phrasing – your excerpt performance will be judged on all artistic merits, not just note accuracy.

WHAT HAPPENS AFTER AUDITIONING

- Local professional musicians will listen to your recording and you will be placed in an orchestra based on your audition performance. Other factors such as instrumentation needs may be considered as well.
- The audition level you choose to prepare does not ensure placement in those orchestras; placements are based on the overall quality of your performance.
- GTCYS makes every effort to offer all students placements; if you are placed in an orchestra that has too many of your instrument then you may be placed on a waitlist.
- **Tuition assistance and support for private lessons is available.** GTCYS is committed to serving young musicians regardless of financial constraints. Interested families can find more information at gtcys.org/auditions.
- Previous participation in GTCYS does not guarantee placement and **all placements are final**.

FLUTE - Sinfonia and Concertino

Musicians should have playing experience through three sharps and flats and beginning use of vibrato. To audition for one of these orchestras, please prepare and record the following:

SCALES

- scales below for reference only - you may perform with any articulation

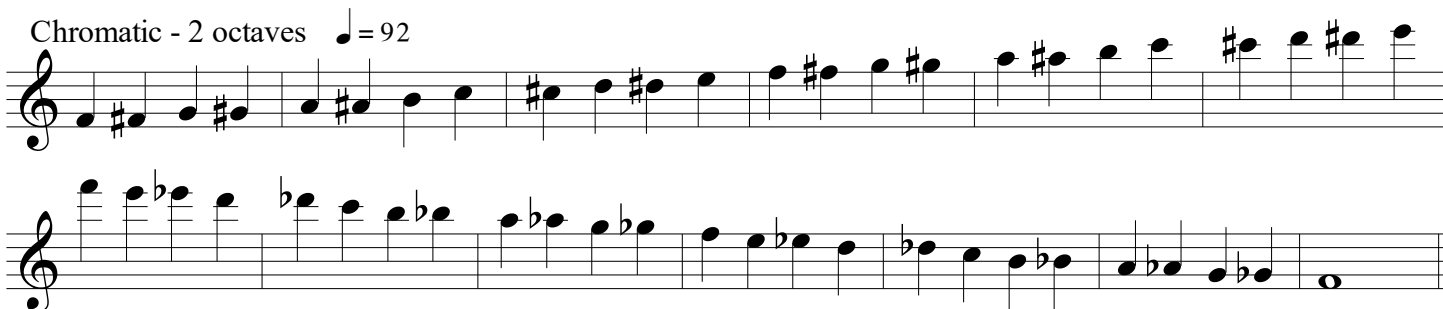
D major - 1 octave (2 octaves optional) ♩ = 92



F minor - 1 octave (2 octaves optional) ♩ = 92



Chromatic - 2 octaves ♩ = 92



SOLO

- your choice - 3 minutes or less

EXCERPT

Dvorak, arr. Isaac -
Slavonic Dance No. 3

Moderato



FLUTE - Camerata and Concert Orchestra

Musicians should be comfortable in advanced key signatures, have good sight-reading skills, and an advancing use of vibrato. To audition for one of these orchestras, please prepare and record the following:

o#° Q o

- B major - 2 octaves in eighth notes (quarter note = 72)
- F-sharp minor - 2 octaves in eighth notes (quarter note = 72)
- Chromatic - 2 octaves (begin on B-flat) in eighth notes (quarter note = 72)

s\Q

- your choice - 3 minutes or less ...

EC#-khuo

Gruselle - *Three Riders Overture*

Moderato (♩ = c. 108)

The musical score for "Gruselle - Three Riders Overture" is in 4/4 time, Moderato (♩ = c. 108). It features a flute part with various dynamics and articulations. The score is divided into three systems. The first system starts with a treble clef and a key signature of one sharp (F#). The first measure is a whole rest, followed by a half note F#4, a quarter note G#4, a quarter note A4, and a quarter note B4. The second system starts with a treble clef and a key signature of one sharp (F#). The first measure is a whole rest, followed by a half note F#4, a quarter note G#4, a quarter note A4, and a quarter note B4. The third system starts with a treble clef and a key signature of one sharp (F#). The first measure is a whole rest, followed by a half note F#4, a quarter note G#4, a quarter note A4, and a quarter note B4. The score includes dynamics such as *mf*, *f*, and *mp*, and articulations like accents and slurs.

Mozart, arr. Isaac - *Symphony No. 40, Mvt. I*

Allegro molto

The musical score for "Mozart, arr. Isaac - Symphony No. 40, Mvt. I" is in 4/4 time, Allegro molto. It features a flute part with various dynamics and articulations. The score is divided into three systems. The first system starts with a treble clef and a key signature of two flats (Bb, Eb). The first measure is a whole rest, followed by a half note Bb4, a quarter note C5, a quarter note D5, and a quarter note E5. The second system starts with a treble clef and a key signature of two flats (Bb, Eb). The first measure is a whole rest, followed by a half note Bb4, a quarter note C5, a quarter note D5, and a quarter note E5. The third system starts with a treble clef and a key signature of two flats (Bb, Eb). The first measure is a whole rest, followed by a half note Bb4, a quarter note C5, a quarter note D5, and a quarter note E5. The score includes dynamics such as *f* and *mp*, and articulations like accents and slurs.

FLUTE - Philharmonic and Symphony

Musicians should be skilled in all major and minor keys, be able to play with continuous vibrato, and have the ability to double and triple tongue. To audition for one of these orchestras, please prepare and record the following:

SCALES

- C major - 3 octaves in sixteenth notes (quarter note = 60)
- C-sharp minor - 2 octaves (3 octaves optional) in sixteenth notes (quarter note = 60)
- Chromatic - 3 octaves (begin on C) in sixteenth notes (quarter note = 60)

SOLO

- your choice - 3 minutes or less

EXCERPTS

Stravinsky - *The Firebird* (1919 Suite): Round of the Princesses



Stravinsky - *The Firebird* (1919 Suite): Infernal Dance

EXCERPTS CONTINUE ON FOLLOWING PAGE

FLUTE - Philharmonic and Symphony (continued)



Brahms - *Tragic Overture*

greater twin cities youth symphonies

Molto più moderato

Musical score for "The Rose Tree" in G major, 2/4 time. The score is arranged for voice and piano. The key signature has one sharp (F#), and the time signature is 2/4. The piece consists of 256 measures.

The score is divided into three systems:

- System 1 (Measures 1-128):** The vocal melody begins with a half rest, followed by a quarter note G4, a quarter note A4, and a quarter note B4. The piano accompaniment starts with a half rest, followed by a quarter note G4, a quarter note A4, and a quarter note B4. The tempo/mood is marked *p dolce*.
- System 2 (Measures 129-224):** The vocal melody continues with a half rest, followed by a quarter note G4, a quarter note A4, and a quarter note B4. The piano accompaniment features a series of sixteenth notes. The tempo/mood is marked *cresc.*.
- System 3 (Measures 225-256):** The vocal melody concludes with a half rest, followed by a quarter note G4, a quarter note A4, and a quarter note B4. The piano accompaniment features a series of sixteenth notes. The tempo/mood is marked *f*.