

2026-27 Audition Guidelines: BASSOON

Auditions for the Greater Twin Cities Youth Symphonies (GTCYS, pronounced git-seez) are opportunities to play your instrument and submit a short, recorded video so we can place you with one of our 11 incredible school-year orchestras! Because of GTCYS' multi-level orchestra structure, almost every student is accepted!

WHAT TO PREPARE

The next pages of this packet list the required scales and excerpts for each playing level. Once you decide which level best fits your abilities, prepare:

1. All the **scales** listed for your audition level. Minor scales can be performed in any form (natural, harmonic, or melodic), unless otherwise stated.
2. **Solo**: Prepare a piece of music (solo, etude, school ensemble music, or similar) that demonstrates your best playing abilities, that's no longer than 3 minutes. Record without piano accompaniment. Select a shorter section to fit the time limit if needed.
3. All the **excerpts** (short selections of music) listed for your audition level.

AUDITION STEPS

1. **Register for your audition** at snapaudition.com: Click "Find an Audition" and search for Greater Twin Cities Youth Symphonies.
2. **Pick one level** based on your abilities and experience. To learn more about each orchestra, visit gtcys.org/orchestras.

Skill Level	Typical Strings Orchestra Placement	Typical Winds, Brass, Percussion, and Harp Orchestra Placement
Beginning	Philharmonia	Sinfonia
Developing	Sinfonia Concertino	Concertino
Intermediate	Camerata Concert Orchestra	Camerata Concert Orchestra
Advanced	Philharmonic Symphony	Philharmonic Symphony

3. **Practice**, practice, practice!
4. **Record your audition video in one take** (no editing!)
5. Complete your registration in snapaudition.com and **upload your audition video** by **Tuesday, May 19, 2026 at 11:59pm**.
6. **Audition results will be emailed in June.**

MORE INFO

Find detailed instructions, tips, frequently asked questions, and tuition assistance information at gtcys.org/auditions. Contact us at mail@gtcys.org or call 651.602.6800 with questions.

BASSOON - Sinfonia East & West

Musicians should have playing experience through two sharps and flats. Prepare and record the following requirements if they accurately represent your current skill level. Your chosen audition level doesn't guarantee or limit your orchestra placement.

SCALES

- Scales may be performed with any articulation.

F major - 1 octave ♩ = 60



B-flat major - 1 octave ♩ = 60



Chromatic scale - 1 octave ♩ = 60



SOLO

- Your choice - 3 minutes or less, unaccompanied

EXCERPT

Traditional Scottish - *Loch Lomond*

Moderato ♩ = 84



BASSOON - Concertino East & West

Musicians should have playing experience through three sharps and flats. Prepare and record the following requirements if they accurately represent your current skill level. Your chosen audition level doesn't guarantee or limit your orchestra placement.

SCALES

- Scales may be performed with any articulation.

G major - 2 octaves ♩ = 60



BASSOON - Concertino East & West (continued)

Bishop - Artemis Rising, mm. 82-96

Allegro con fuoco ♩ = 138

p

87

gradual cresc. -----

92

ff

BASSOON - Camerata orchestras and Concert Orchestra

Musicians should be comfortable in advanced key signatures, have good sight-reading skills, and have beginning use of vibrato. Prepare and record the following requirements if they accurately represent your current skill level. Your chosen audition level doesn't guarantee or limit your orchestra placement.

SCALES

- E-flat major - 2 octaves in eighth notes (quarter note = 72)
- E minor - 2 octaves in eighth notes (quarter note = 72)
- Chromatic - 2 or 3 octaves (starting on low B-flat) in eighth notes (quarter note = 72)

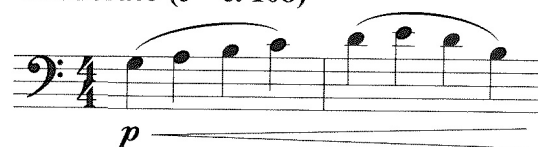
SOLO

- Your choice - 3 minutes or less, unaccompanied

EXCERPTS

Gruselle - *Three Riders Overture*, mm. 62-73

Moderato (♩ = c. 108)



64

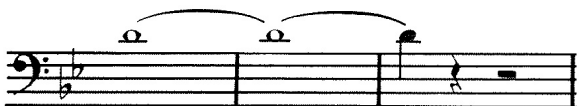


70



Mozart, arr. Isaac - *Symphony No. 40, Mvt. I*, mm. 213-224

♩ = 116
Allegro molto



BASSOON - Philharmonic and Symphony

Musicians should be skilled in all major and minor keys, have advanced use of vibrato, and be comfortable reading tenor clef. Prepare and record the following requirements if they accurately represent your current skill level. Your chosen audition level doesn't guarantee or limit your orchestra placement.

SCALES

- B major - 3 octaves in eighth notes (quarter note = 92)
- F minor - 2 octaves in eighth notes (quarter note = 92)
- Chromatic - full range (lowest note to highest) in eighth notes (quarter note = 92)

SOLO

- Your choice - 3 minutes or less, unaccompanied

EXCERPTS

Mahler - *Symphony No. 3, Mvt. 1, Reh. 28 - m. 362*

Schwungvoll.
Immer dasselbe feurige Marschtempo, ohne zu eilen.

ff

3

This musical excerpt is written for bassoon in a tenor clef. It is in 2/2 time and the key signature has one sharp (F#). The tempo is marked 'Schwungvoll.' and the performance instruction is 'Immer dasselbe feurige Marschtempo, ohne zu eilen.' The music begins with a fortissimo (ff) dynamic. The first staff shows a series of eighth notes. The second staff continues with eighth notes and includes a triplet of eighth notes. The third staff concludes with a triplet of eighth notes.

Mahler - *Symphony No. 3, Mvt. 3, 8 mm. before Reh. 8 - Reh. 9*

Comodo. Scherzando, ohne Hast.

p

2

ff

fff

f

ff

ff

1

1

p < ff p < ff p < ff p ff

4

This musical excerpt is written for bassoon in a tenor clef. It is in 2/4 time and the key signature has two flats (Bb, Eb). The tempo is marked 'Comodo. Scherzando, ohne Hast.' The music begins with a piano (p) dynamic. The first staff shows a series of eighth notes. The second staff continues with eighth notes and includes a triplet of eighth notes. The third staff concludes with a triplet of eighth notes. The fourth staff shows a series of eighth notes with dynamic markings p, ff, p, ff, p, ff, p, ff. The fifth staff shows a series of eighth notes with dynamic markings ff, ff, f, ff, ff. The sixth staff shows a series of eighth notes with dynamic markings p, ff, p, ff, p, ff, p, ff.

EXCERPTS CONTINUE ON FOLLOWING PAGE

BASSOON - Philharmonic and Symphony (continued)

Mahler - *Symphony No. 3, Mvt. 3*, mm. 418-444

Comodo. Scherzando, ohne Hast.

Musical score for Bassoon, Mahler *Symphony No. 3, Mvt. 3*, mm. 418-444. The score is in 2/4 time and B-flat major. It consists of three systems of staves. The first system (mm. 418-424) features a bassoon line with dynamics *f*, *f*, and *ff*. The second system (mm. 425-431) features a bassoon line with dynamics *ff* and *ff*. The third system (mm. 432-444) features a bassoon line with dynamics *ff non legato* and *f*. The score includes various musical notations such as slurs, accents, and fingerings.

Mahler - *Symphony No. 3, Mvt. 5*
Opening - Reh. 2

Lustig im Tempo und keck im Ausdruck.

staccato

Musical score for Bassoon, Mahler *Symphony No. 3, Mvt. 5*, Opening - Reh. 2. The score is in 4/4 time and B-flat major. It consists of three systems of staves. The first system (mm. 1-4) features a bassoon line with dynamics *f* and *f*. The second system (mm. 5-8) features a bassoon line with dynamics *pp* and *p*. The third system (mm. 9-12) features a bassoon line with dynamics *p* and *p*. The score includes various musical notations such as slurs, accents, and fingerings.